



Inclusive Development Network

Community leaders driving impactful talent strategies

**Applicant Webinar
January 8, 2019**



WELCOME

Moderators

Jade Arn

Director, Workforce and
Economic Development

Angela Gallagher

Senior Associate

Session Agenda

- About Us
- About the Inclusive Development Network
- Frequently Asked Questions
- Open Q&A

ABOUT US: CAEL

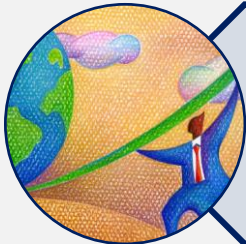
COUNCIL FOR ADULT AND EXPERIENTIAL LEARNING (CAEL)



Aligning workforce and education with economic development



Increasing collaboration among regional stakeholders



Leveraging the value of the workforce ecosystem to support and spur economic growth

ABOUT US: INCLUSIVE DEVELOPMENT NETWORK PARTNERS



INTERNATIONAL
ECONOMIC DEVELOPMENT
COUNCIL



burningglass[®]
TECHNOLOGIES



avalanche
CONSULTING



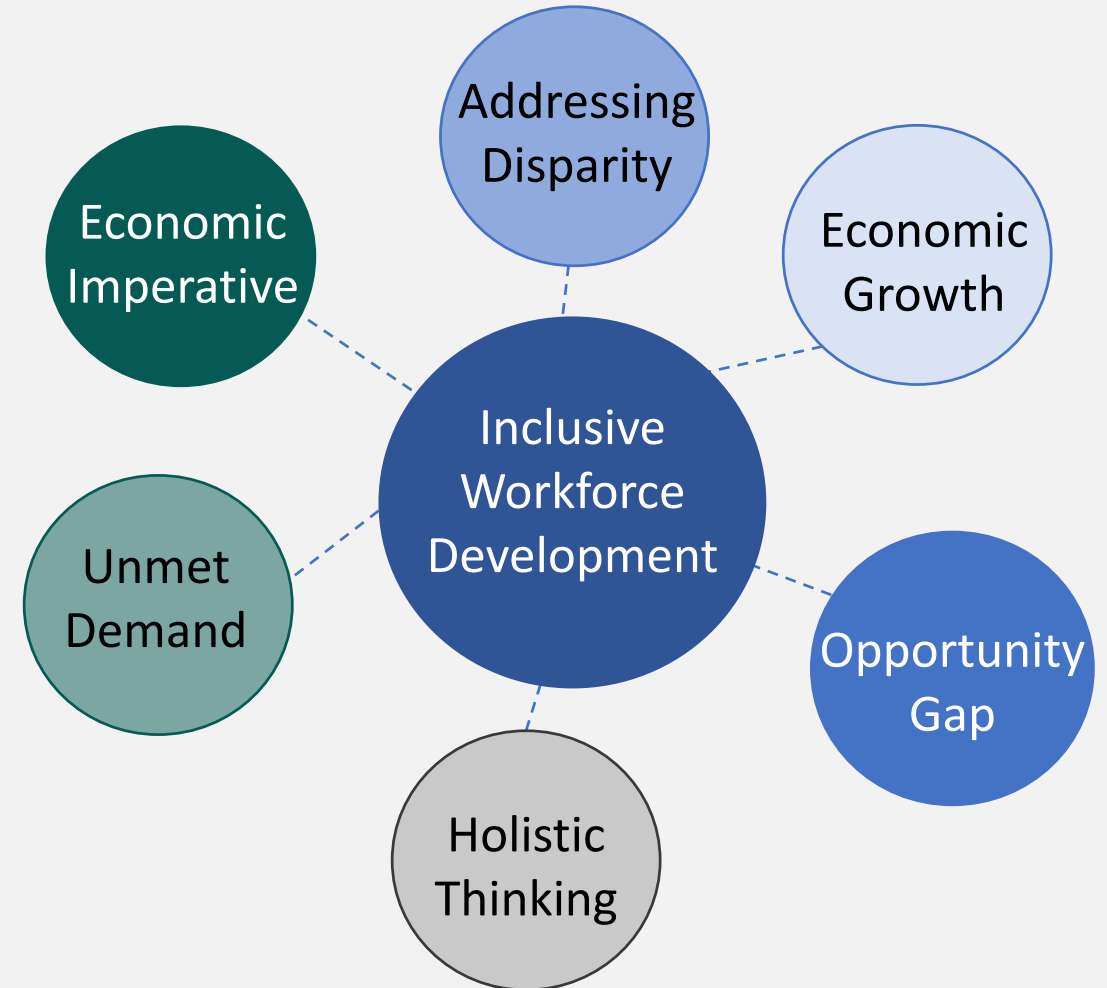
QUEST
SITE SOLUTIONS

*The Inclusive Development Network is made possible by funding support from
ECMC Foundation and JPMorgan Chase & Co.*

ABOUT THE INCLUSIVE DEVELOPMENT NETWORK (IDN)

What is inclusive workforce development?

A critical facet of economic growth, inclusive workforce development involves deliberate strategies to create access for and meaningfully engage underrepresented and underserved populations in the labor market.



ABOUT THE INCLUSIVE DEVELOPMENT NETWORK (IDN)

Five communities will be selected to participate in the inaugural IDN

Objective

1. To build the capacity of economic development entities to lead, design, and implement sophisticated, effective, and inclusive workforce development strategies
2. To model approaches to inclusive workforce development for the rest of the field

ABOUT THE INCLUSIVE DEVELOPMENT NETWORK (IDN)

Outcome

Comprehensive Action Plan

1. summarizing community landscape analysis
2. outlining goals, strategies, and tactics

Activities

18-month, three phased process

- Phase 1: Planning and Landscape Analysis
Phase 2: Strategy Development and Prioritization
Phase 3: Implementation



FREQUENTLY ASKED QUESTIONS: ACTIVITIES AND BENEFITS OF PARTICIPATION

Selected communities receive

- \$60,000 stipend
- Engagement in community of practice
- Virtual and in-person Network convenings
- TA from national experts
- Landscape analysis
- Support in strategy development and implementation
- Sustainability planning
- Recognition on a national stage

Selected communities expected to

- Create a leadership team of community stakeholders
- Participate in 5 in-person IDN convenings
- Host 1 convening in their community
- Fully engage in all project activities

FREQUENTLY ASKED QUESTIONS: ACTIVITIES AND BENEFITS OF PARTICIPATION

Stipend

- Intended to offset cost of participation
- Can be applied toward costs including, but not limited to:
 - Travel expenses for IDN convenings
 - Meeting expenses to host IDN convening
 - Staff time related to IDN activities
 - Implementation of strategies

FREQUENTLY ASKED QUESTIONS: ELIGIBLE APPLICANTS

Community definition

A metropolitan area, a labor shed, a county or group of counties, an economic or workforce development area, municipality, or another type of geographic region

Eligible communities

- Selected communities to range in size, location, challenges and experience in this arena
- Minimum population of 150,000
- Contiguous communities may apply as a partnership or consortium

FREQUENTLY ASKED QUESTIONS: ELIGIBLE APPLICANTS

Eligible lead applicants

- chambers of commerce
- economic development organizations (EDOs)
- economic development departments
- economic development-focused civic intermediaries
- other entities fulfilling a primary economic development role

Stakeholders who do not meet eligibility requirements for lead applicant are encouraged to identify and partner with an economic development entity in their region.

FREQUENTLY ASKED QUESTIONS: SUCCESSFUL APPLICANTS

Successful applicants will demonstrate

- Support for principles of inclusive development
 - Why this opportunity is important, what issues it can help their community solve, how it will support/augment existing efforts (as applicable)
 - Commitment to fully participate in IDN activities
 - Intent to implement specific activities to support prioritized strategies
-
- Evidence of partner “buy-in”
 - Letters of support, MOU’s, or other evidence of commitment
 - Evidence of funds or willingness/ability to secure funds to support implementation and sustainability

FREQUENTLY ASKED QUESTIONS: APPLICATION PROCESS

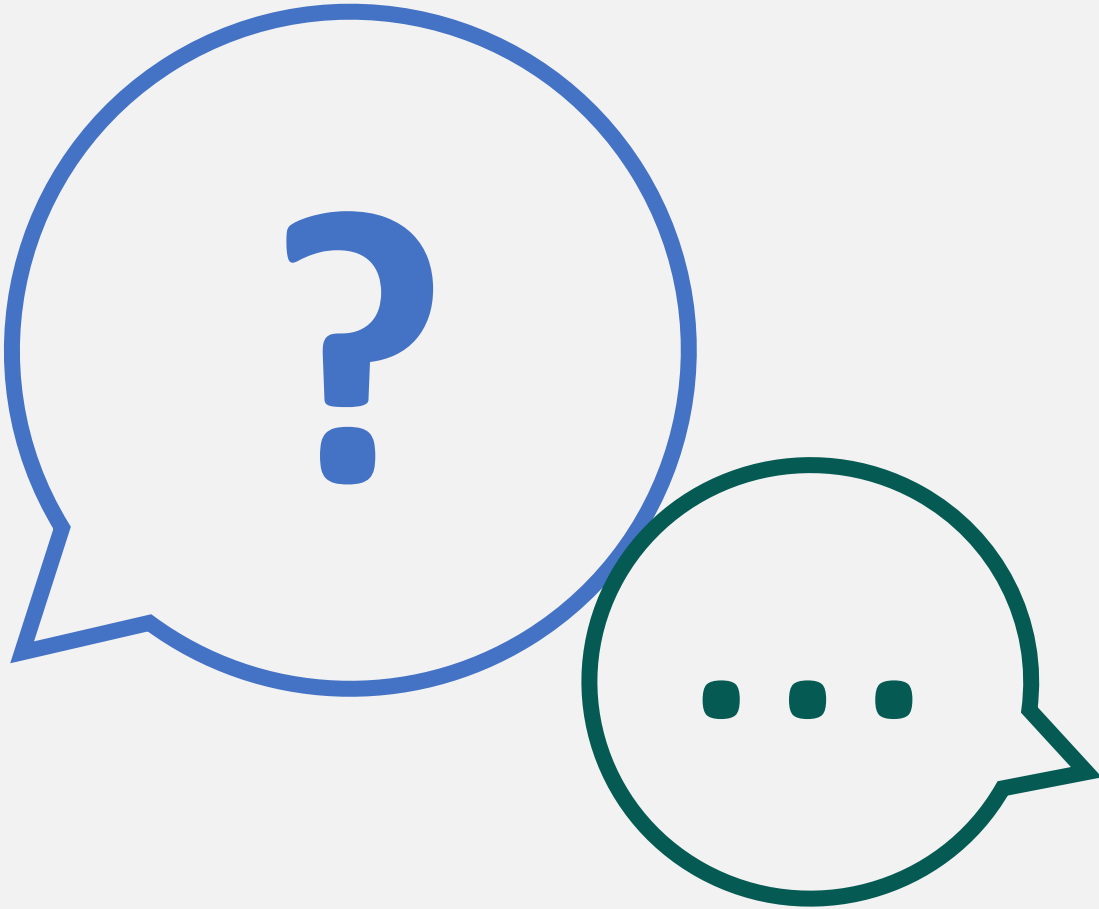
To Apply

- Submit completed application via email to **idnetwork@cael.org**
- By **Thursday, January 31, 2019 at 5:00pm CST**
- Limit your response to a maximum of 5 pages (not including attachments)
- Download application at **www.inclusivedevelopmentnetwork.org**

Selections Announced

- By March 1, 2019

OPEN QUESTIONS AND ANSWERS





THANK YOU

Submit applications to idnetwork@cael.org
by Thursday, January 31, 2019 – 5:00pm CST

Visit www.inclusivedevelopmentnetwork.org

- Information about the opportunity
- Responses to questions
- Webinar recording

