

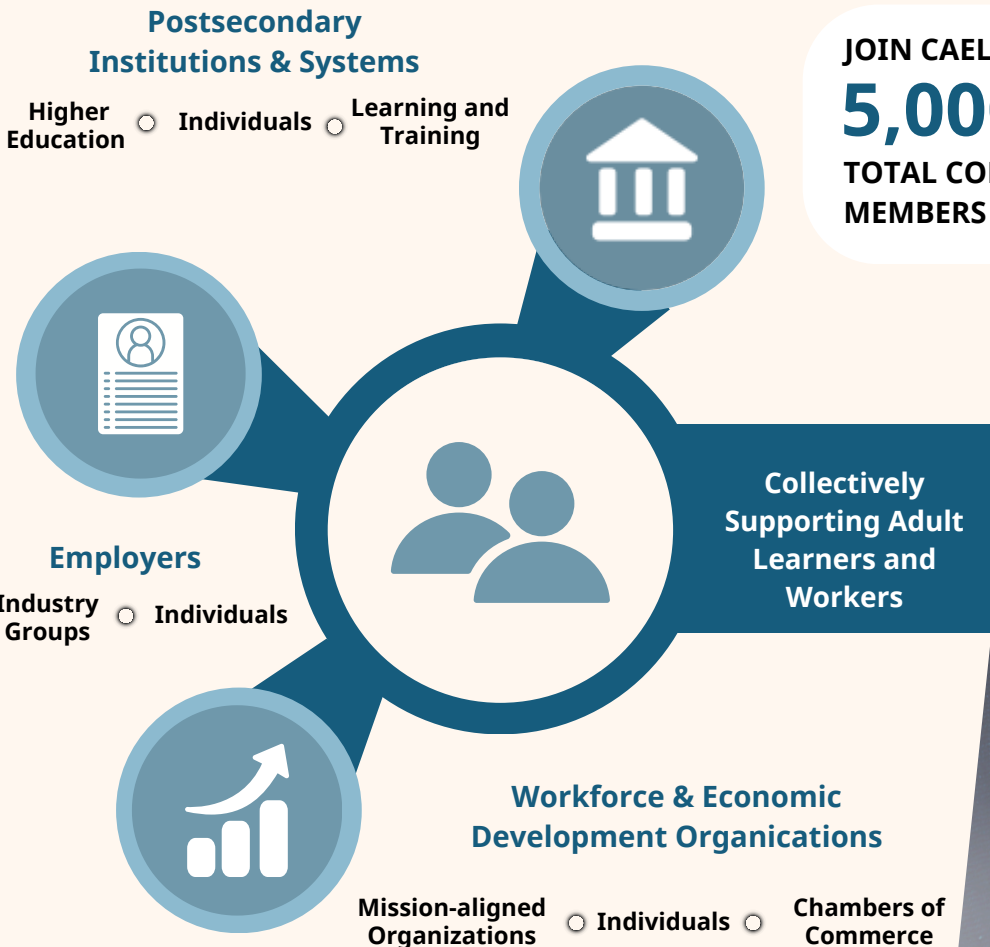


MEMBERSHIP

From Educators and Employers to Workforce and Economic Developers, CAEL Membership Builds Partnerships That Link Learning and Work



Build effective career pathways in your community! CAEL welcomes learning providers, employers, workforce organizations, and individual professionals to become members.



JOIN CAEL
5,000 +
TOTAL COMMUNITY MEMBERS

CAEL MEMBER BENEFITS

CAEL Member Benefits - *Always Evolving!*

Connections

- Networking
- Online Community Hub
- Communities of Practice
- Coffee with CAEL - Peer learning webinars
- CAEL Member Seal
- Volunteer opportunities
- Member Directory



Solutions

- Microcourse series
- Adult Learner Advocate Badge
- Early access to research, reports, & grant opportunities
- CAEL-The *EvoLLLution* newsletter
- Co-author blogs & articles
- Quick Start Kits, Tool Kits & Job Aids
- Member Workshops
- Resource Library



Tools & Savings



- Annual Labor Market Report *(institutional/organizational members)*
- Discounted Member Rates on:
 - Conferences & events
 - Professional Development courses
 - CAEL products and services
- CPL Provider Network listing *(institutional members)*



cael.org

All Benefits Accessible through the CAEL Member Hub!
<https://memberhub.cael.org/home>



CAEL GROUP MEMBERSHIP RETENTION RATE



CAEL members represent an extensive community of stakeholders working to build new ecosystems and transform traditional structures to better meet the needs of today's adult learners in communities, across industries, and among postsecondary learning providers.*

*2024 Member Survey Data

To join CAEL, contact us at membershipservices@cael.org



“Whenever I need resources or advice in my work to improve how I view or serve the adult working learner, I turn to CAEL.”

*Tracy Robinson, Director Innovative Academic Initiatives,
The University of Memphis*

“As the CEO of a workforce development board, I find tremendous value in CAEL’s thought leadership, tools and network to help us grow our knowledge in how to best partner with postsecondary education. CAEL provides resources and best-practices that help us to be at the cutting-edge of inclusive, sustainable economic growth for all members of our community.”



Jesse McCree Chief Executive Officer, SCPa Works



“The community CAEL brings to working with adult students is extremely important and helpful. I work in a small team, and it is so great to have a place to ask questions to peers at other institutions, uplift one another and build community with others working towards the same goal.”

Walter Simmons, President and CEO, Employ Prince George's, Inc.

To learn more about membership tiers and current rates, visit <https://memberhub.cael.org>. Or scan the code below to request additional information just for you.



Link Learning and Work





CAEL helps postsecondary institutions and training providers offer a holistic learning experience for adult learners. This includes aligning curricula to positive labor market outcomes in growth industries, assessment and recognition of prior learning and coursework that develop college-level competencies, developing industry partnerships, and more.

CAEL enables workforce boards and organizations to become active and impactful partners in their regional centers. Whether this is focused on better serving their clients, strengthening stakeholder partnerships, or developing innovative strategies, CAEL is ready to help.



Economic development organizations and chambers of commerce are critical to CAEL's ultimate goal to empower adults to find meaningful and economically sustaining careers. This sector is also essential to building robust regional economies. CAEL's long history with industry associations like EPCE and NACTEL has helped inform our supportive products and services.



**Join us in Pittsburgh for our annual conference. Nov 3-6, 2026.
The CAEL Conference is widely known as the leading place to
connect and network with experts from postsecondary education
and training providers, workforce and economic development
leaders, and industry groups.**

