

# Become a CAEL Member

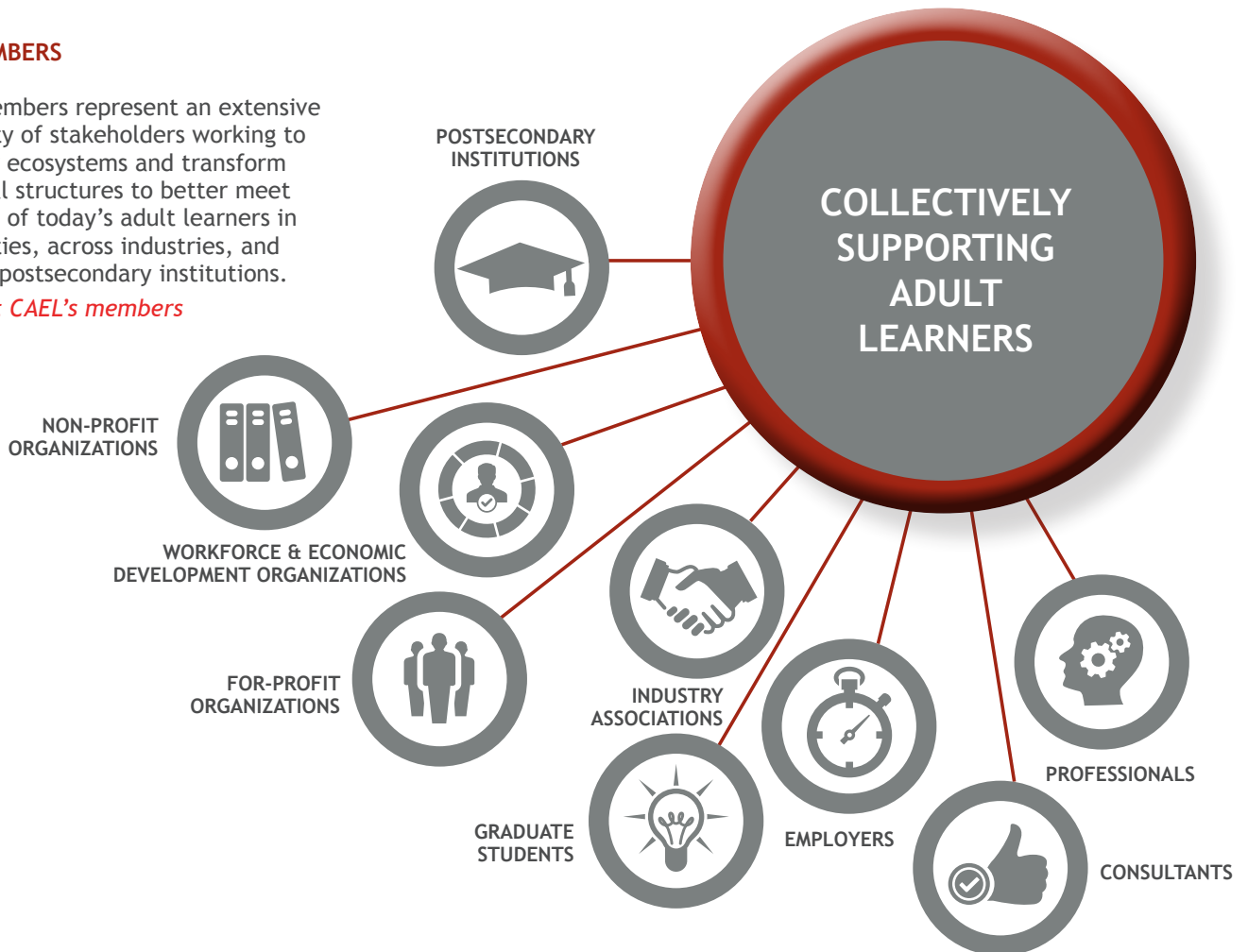


The Council for Adult and Experiential Learning (CAEL) membership brings together postsecondary institutions, organizations, regions, employers, and stakeholders committed to lifelong learning.

## CAEL MEMBERS

CAEL's members represent an extensive community of stakeholders working to build new ecosystems and transform traditional structures to better meet the needs of today's adult learners in communities, across industries, and inside all postsecondary institutions.

*Check out CAEL's members*



## CAEL'S VALUE TO ITS MEMBERS — *Learn more*

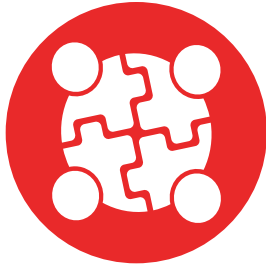
- CAEL is a force multiplier for those who lead, manage, and implement initiatives that support working adult learners.
- CAEL assists members as they build new approaches to serving working adult learners.
- CAEL provides members with connections, solutions, and tools that support long-term, positive impacts.

*View CAEL's Strategic Plan*

*CAEL is committed to providing the highest level of value to its members by collectively working toward a future when 'every adult has a pathway to lifelong learning and meaningful work.'*

Christine Carpenter, VP Membership Engagement, CAEL

## CAEL Membership Benefits for Individuals, Institutions, Systems, and Affiliates



**CONNECTIONS** that Promote Innovative Ideas and Actions



**SOLUTIONS** that Solve Problems



**TOOLS** that Lead to Transformation

### CONNECTIONS

**Membership Community** - Access to build connections with CAEL's membership community including postsecondary education professionals, employers, and workforce organizations across the U.S.

**Personal Welcome** - Get started, informed, and connected with details on how to take full advantage of CAEL's membership benefits.

**CAEL Awards and Professional Distinctions** - Nominate outstanding members and individuals in the field to recognize their work with adult learners.

**Access to Online Communities of Practice** - CAEL is building an online community platform for members to:

- Collaborate with thought leaders on various issues and challenges.
- Find approaches and solutions for initiatives geared towards an adult pathway to lifelong learning and meaningful work.
- Participate in committees to gain and share knowledge on specific topics, such as working adult learners, accelerated learning, and strategic partnerships.

### SOLUTIONS & TOOLS

**Member Content** - Access to publications, research, and case studies as well as CAEL member-only content from *'The EvolLLution'*, a publication dedicated to the working adult learner community. CAEL members also can author and co-author whitepapers, case studies, and articles.

**Special Membership Pricing (savings) on Learning Experiences:**

- **Workshops and Professional Learning & Development** - (\$200 average registration savings) - Access to CAEL professional development workshops and certification offerings.
- **Events:** Virtual and face-to-face convenings with \$100 average registration savings.

- **Free webinars** for members on topics relevant to the support of adult learners.
- **CAEL Annual Conference:** Our conference brings together experts from across the adult learning and workforce spectrum. Members receive significant savings on registration.

**Member Job Aids & Mini-Toolkits:**

- Creating an Adult Friendly Campus
- Marketing to Adult Students
- Accelerated Degree Programs with the Adult Learner in Mind
- Competency Frameworks and Crosswalks
- ...and more!

## Additional Membership Benefits for Institutions, Systems, and Affiliates



### SOLUTIONS & TOOLS

**CAEL Consultant Services** - A one-hour informational session (valued at \$300) with a CAEL expert focused on a specific topic such as **effectively serving adult learners**, creating a stronger workforce and economy, or implementing prior learning assessment.

**Complimentary Credit Predictor Tool for your Website** - Your prospective and current students will be able to see a snapshot of time and money savings they may receive at your institution through Prior Learning Assessment opportunities offered to them.

**Special Membership Bulk Pricing on Learning Experiences** - Significant savings (\$750 average) on bulk attendee registrations (three or more) to CAEL's professional development learning experiences. Member institutions and organizations are not limited in the number of registrations.

**Learning Design and Instructional Technology Coursework** - CAEL's partnership with iDesign is a professional development benefit you can utilize immediately. iDesigns LX Pathways is a

competency-based, educational journey for those interested in becoming an Instructional Technologist or Learning Architect.

**Special Membership Pricing on CAEL Services** - Members receive savings on CAEL services, including consulting services, adult learner success, and technical assistance services.

**More Member Benefits** - CAEL continues to build additional tools and resources to better support members in their goals supporting adult learners.

---

*"Whenever I need resources or advice in my work to improve how I view or serve the adult working learner, I turn to CAEL."*

Tracy Robinson, Director  
Innovative Academic Initiatives  
The University of Memphis

**JOIN CAEL - [membershipservices@cael.org](mailto:membershipservices@cael.org)**

# CAEL Membership Types and Annual Dues



Join a visionary group of Postsecondary Institutions, Affiliates, and Individuals committed to lifelong learning.

**Postsecondary Institution** Membership rates based on institution full-time equivalent (FTE) enrollment.

## Individual Institution

1 - 1,000: \$655

1,001 - 5,000: \$800

5,001 - Over: \$1,015

## System

Are you a system seeking ways to assist your colleges and universities with their goals and strategies in serving adult learners? CAEL now offers a variety of options for systems that will help maintain a strategic and systemic focus that will align your institutions with common and shared best practices and goals.

Postsecondary System Institutions  
For 3 or more institutions  
15% discount on individual  
institution fee

Postsecondary System Office  
For the system institution's  
official representatives  
\$1,065  
Complimentary if 5 or more institutions are members

Extended Postsecondary System  
For system office plus 20 system-wide  
additional individuals'  
\$3,250

**Affiliates** Membership rates based on affiliation

Includes employers, for-profit and non-profit organizations, workforce & economic development organizations, and industry associations and coalitions.

Affiliate  
\$1,150

Affiliate  
(under 15 employees)  
\$490

**Collaborator Membership**  
For affiliate organizations to directly connect  
to postsecondary members

**Individuals** Membership rates based on affiliation.

Includes educators, professionals, and students pursuing graduate studies.

Individual  
Membership  
\$180

Student  
\$80

Questions? - contact CAEL at [membershipservices@cael.org](mailto:membershipservices@cael.org)

**JOIN CAEL - [membershipservices@cael.org](mailto:membershipservices@cael.org)**



**CAEL**  
Linking Learning and Work

The Council for Adult & Experiential Learning (CAEL)  
A Strada Education Network Affiliate

10 West Market Street  
Suite 1100  
Indianapolis, IN 46204  
Ph: 312-499-2600